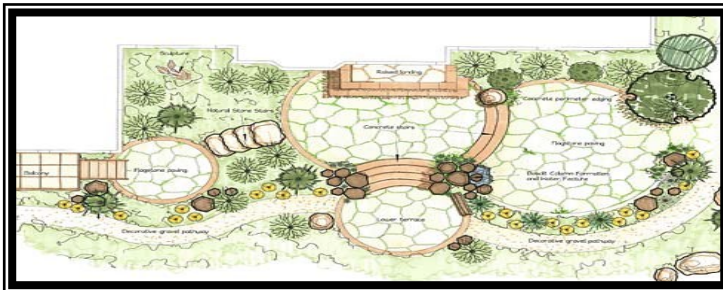


# Firewise



# Landscaping Contest

The **Fire** Adapted **Communities** Learning Network and the **Greater Flagstaff Forests**

**Partnership** is hosting a **Firewise Landscaping Contest!** Join us and prepare your home for wildfire season while creating a beautiful **Firewise** landscape!

**A total of \$1000 in prizes will be awarded to the top contestants. The deadline for entry is May 4th, 2016. Judging begins May 9th, 2016.**

For more information on [how to enter](#), visit :

[www.flagstaff.az.gov/wildlandfire](http://www.flagstaff.az.gov/wildlandfire)

For Firewise landscaping ideas and projects visit:

[www.firewise.org](http://www.firewise.org)

